



HASSMAN RESEARCH INSTITUTE

Improving the Quality of Life

QUALITY

DELIVERING HIGH QUALITY SERVICES TO EACH STUDY PARTICIPANT. QUALITY IS THE FOUNDATION OF OUR COMPANY FOR EVERY STUDY WE EXECUTE

EXPERIENCE

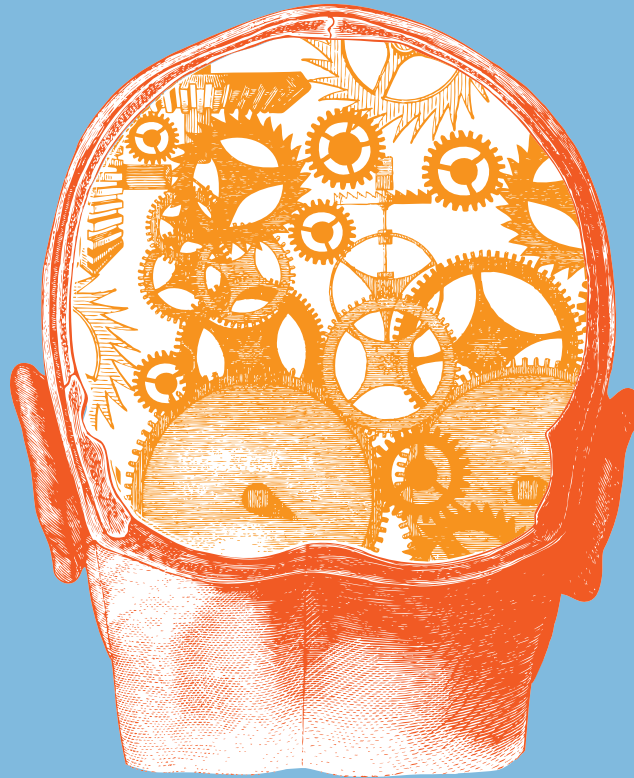
OVER 35 YEARS OF EXPERIENCE CONDUCTING PHASE I-IV CLINICAL TRIALS

INNOVATIVE

2 OUTPATIENT UNITS • 1 INPATIENT UNIT • SPACE TO HOUSE 40 BEDS • PRIVATE DOSING • 14 EXAM ROOMS

EXPERTISE

SPECIALTIES INCLUDE:
ADDICTION, DERMATOLOGY, ENDOCRINOLOGY, GASTROENTEROLOGY, NEUROLOGY, PAIN, AND PSYCHIATRY



GEARED FOR SUCCESS

LOCATED ON A LARGE CAMPUS IN BERLIN, NEW JERSEY, JUST TWENTY MINUTES FROM PHILADELPHIA, HASSMAN RESEARCH INSTITUTE (HRI) IS A LEADING CLINICAL RESEARCH ORGANIZATION WITH OVER 35 YEARS OF EXPERIENCE CONDUCTING PHASE I-IV CLINICAL TRIALS IN A WIDE VARIETY OF THERAPEUTIC AREAS, INCLUDING ADDICTIONS, GENERAL MEDICINE, HEPATIC AND RENAL, HUMAN ABUSE LIABILITY (HAL), MEDICAL/INFECTIOUS DISEASE, NEUROLOGY, PAIN, PSYCHIATRY, AND SLEEP. HRI IS COMMITTED TO DELIVERING HIGH QUALITY SERVICES TO EACH STUDY PARTICIPANT. QUALITY IS A FOUNDATION OF OUR COMPANY AND FOR EACH AND EVERY STUDY WE EXECUTE, OUR DEDICATION TO QUALITY IS UNCOMPROMISED.